

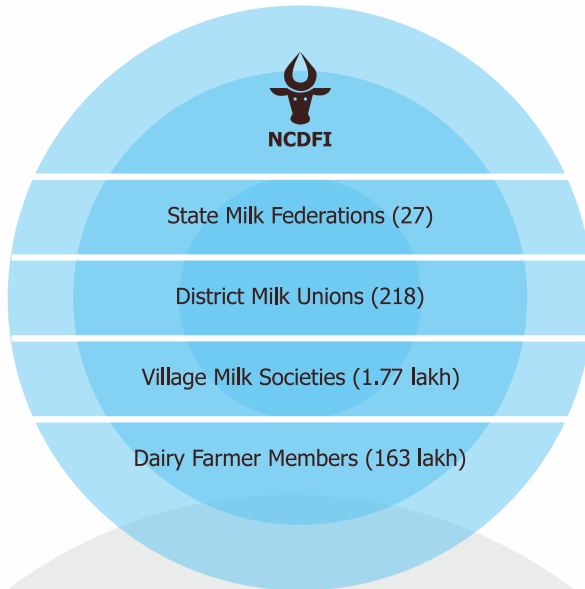


# ACTIVITY REPORT

## DECEMBER 2019

Happy Lohri, Uttarayan, Pongal & Republic Day

# About us



National Cooperative Dairy Federation of India Limited (NCDFI), established in 1970, is an apex body of dairy/oil cooperatives. Its members include federal dairy cooperatives of states / union territories and National Dairy Development Board (NDDB) as its institutional member.

The primary objective of NCDFI is to facilitate the working of dairy cooperatives through coordination, networking and advocacy.

Major activities of the NCDFI are: Coordination of milk and milk product supplies to Defence Services; Providing Online Marketplace for Dairy Industry; and working for genetic improvement of cattle.

Total business transacted by the NCDFI during 2018-19 was ₹ 2,177 crores.

Adoption of technology and its application to ensure better returns to dairy cooperatives and in turn to milk producers has been the primary focus of NCDFI. One such initiative is NCDFI eMarket which was launched on June 10, 2015.

The commodities being traded on NCDFI eMarket platform are Dairy Products, Cattle Feed Ingredients, Edible Oils, Fodder Seeds, Packaging Materials, Sugar, Chemicals, Scrap, etc. apart from Transport Services. This platform ensures transparent, fair, economic and faster dealings for all the members.



## NCDFI eMarket Offices

### Andhra Pradesh

Guntur  
Vijayawada  
Visakhapatnam

### Bihar

Patna

### Delhi

New Delhi

### Gujarat

Ahmedabad  
Anand

### Haryana

Chandigarh

### Jharkhand

Ranchi

### Karnataka

Bengaluru  
Mysore  
Shimoga

### Kerala

Cochin  
Trivendrum

### Madhya Pradesh

Bhopal  
Indore

### Maharashtra

Mumbai  
Nagpur  
Pune

### Tamil Nadu

Chennai  
Coimbatore  
Erode

### Odisha

Bhubaneswar  
Nabarangpur

### Punjab

Chandigarh  
Ludhiana

### Rajasthan

Jaipur  
Jodhpur

### Telangana

Hyderabad

### Uttar Pradesh

Lucknow

### West Bengal

Kolkata  
Siliguri

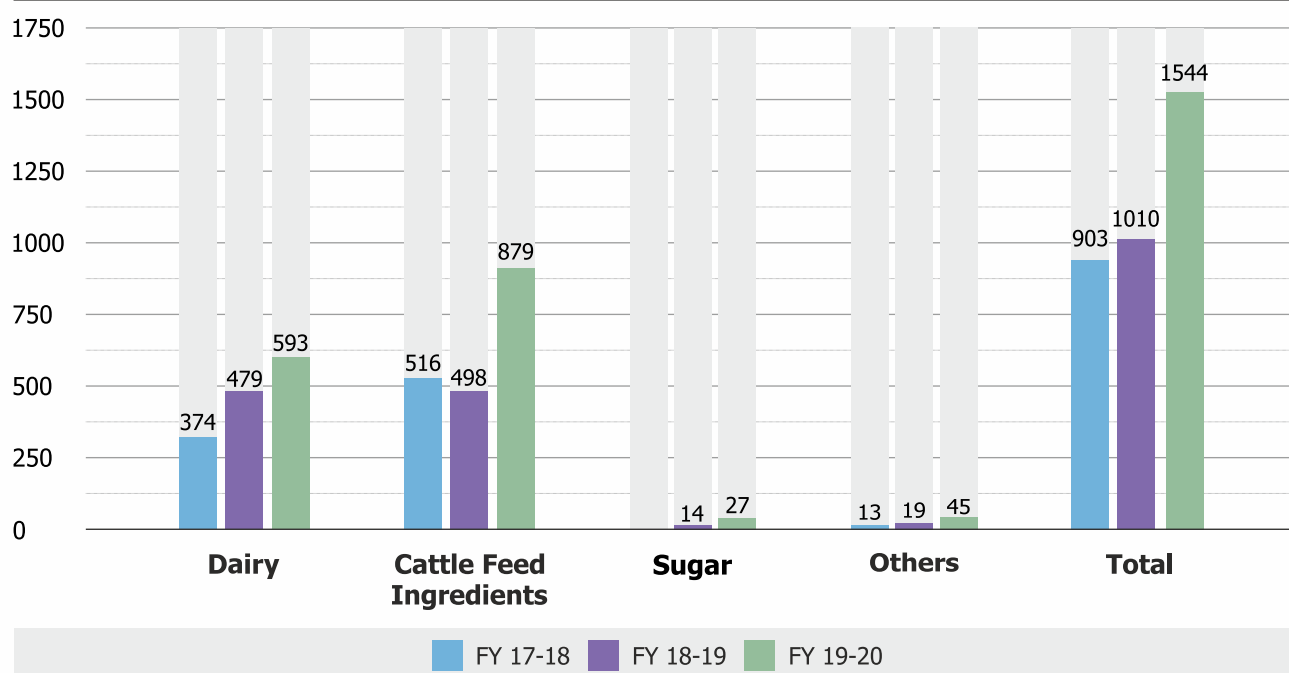
## At a Glance

(December - 2019)

Commodity	Number of Auctions	Quantity Concluded	Unit
<b>Dairy</b>			
Forward Auctions	12	640	MT
Auction Sale	11	352	MT
Auction Sale (Milk)	14	158	Lakh Ltrs
Reverse Auctions	1	100	MT
<b>Cattle Feed Ingredients</b>			
Reverse Auctions	76	1,01,925	MT
<b>Packaging</b>			
Reverse Auctions	2	10,00,070	Nos
<b>Sugar</b>			
Reverse Auctions	13	556	MT
<b>Chemicals</b>			
Reverse Auctions	18	3,54,400	Kgs
<b>Dry Fruits &amp; Nuts</b>			
Reverse Auctions	3	9,500	Kgs
<b>Others</b>			
Reverse Auctions	2	3,000	MT
<b>Scrap</b>			
	14	85	MT
Forward Auctions	10	1,02,550	Kgs
	5	623	Nos

## Transacted Business

(₹ in Crore)



# Product List

## Dairy



Bulk Milk	Scum Ghee <b>New</b>
Butter	SMP
Cheese	Sweep Powder
ETP Wet Solid	Whey Powder
Ghee	WMP

## Cattle Feed Ingredients



Bajra	Gur	Rice Bran/Polish
Barley	Gypsum	Sal Seed
Bentonite Powder	Horse Gram	Salt
Calcite Powder	Inorganic Minerals	Sesame Meal
Calcium Carbonate	Jowar	Shea
Calcium Powder	Kemin Maxim Dry	Soya Bean Meal
Chromium	Koran Bran	Sun Flower Meal
Cobalt Sulphate	Lacto Vanilla	Sweetener
Coconut Meal	Magnesium Oxide	Tapioca
Coffee Husk Powder	Maize	Trace Minerals
Copper Sulphate	Manganese Sulphate	Tur
Cotton Seed Meal	Mineral Mixtures	Urea
Dicalcium Phosphate	Mustard Meal	Wheat
Gram	Palm Kernel Cake	Yeast
Groundnut Meal	Potassium Iodide	Zinc Sulphate
Guar Korma Meal	Ragi	Sodium Thio Sulphate dried / Monohydrates (Anhydrous)
	Rice	

## Sugar



G-60	M-30	S-30
G-100	M-31	S-31
Pharma Grade		

## Edible Oils

Coconut Oil  
Crude Palm Kernel Oil  
Crude Palmolein Oil  
Gingelly Oil  
Groundnut Oil

Palmolein Oil  
Rice Bran Oil  
Sunflower Oil  
Super Olein Oil



## Packaging Materials

Aluminum Foils  
Bags  
BOPP Bags  
Bottles  
Box Strapping Rolls  
Boxes  
Buckets  
Butter Sheet  
Caps  
Carry Bags  
Ceeka Carton New  
Clips  
Corrugated Boxes  
Covers  
Crates  
Crown Corks  
Glasses & Cups  
Ice Cream Cone with sleeves New

Jars  
Labels  
Laminates New  
Mono Cartons New  
Mulching Sheet  
P.P. Strap Rolls  
Pallets  
Paper Reams  
Paper Rolls  
Paperboard Lid New

Parchment Paper  
Poly Films  
Sacks  
Sleeves  
Stickers  
Stitching Thread  
Tape Rolls  
Tins  
Tissue Paper



## Chemicals

Alginate Powder  
Anhydrous Ammonia Gas (Liquid)  
Amyl Alcohol  
Bleaching Powder  
Caustic Soda  
Hydrogen Peroxide  
Idophor

Lysine  
Methonine  
Nitric Acid  
Nuvan  
Soap Oil  
Washing Soda



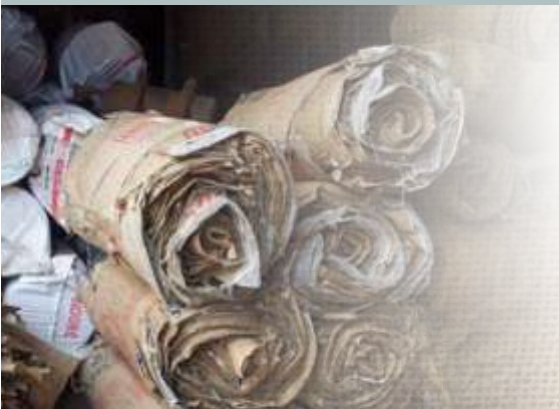
## Others

Badam Essence (Maharaja)  
Biomass Briquettes  
Butter Milk Blend- VD (Spice Flavour)  
Copper Glycinate  
Curd Cultures Danisco (FO1 and FO2)

LysiGEM  
Metapiral  
N. B. Sac  
Palm Sludge Powder  
Rice Husk

Vitamins

## Scrap



Corrugated Boxes  
Metal Steel & Cast Iron  
Plastic Scrap  
Polyfilm  
Printed Milk Film Rolls

Spools  
Used Bags  
Wooden Scrap

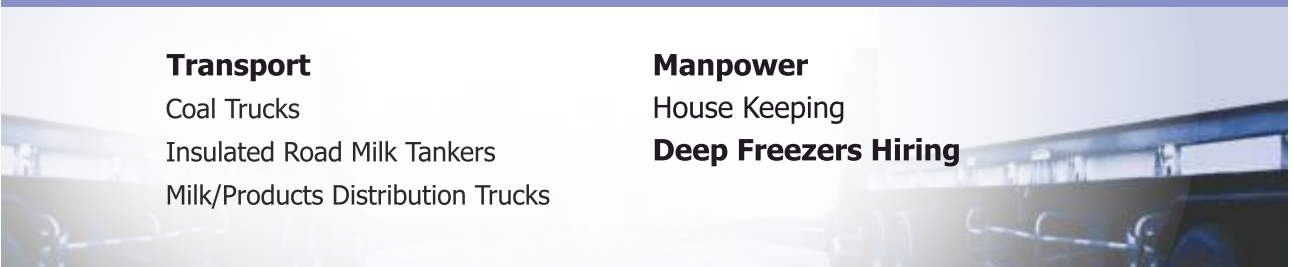
## Services

### Transport

Coal Trucks  
Insulated Road Milk Tankers  
Milk/Products Distribution Trucks

### Manpower

House Keeping  
**Deep Freezers Hiring**



## Fodder Seeds

### **Sorghum**

Sorghum Hybrid Forage (SSG-898)

SSG Multi-Cut Sorghum

CSH 24MF Multi-Cut Sorghum

### **South African Tall Maize**

**Cowpea (UPC-8705)**



## Dry Fruits & Nuts New



Almonds  
Cashew Nut Kernels  
Pistachio Kernels  
Raisins  
Walnut

## Chocolates New

Choco Chips  
Cocoa Butter  
Cocoa Powder  
Dark Chocomass  
Milk Chocomass



# Transacted Volumes

Product	2019-20*	2018-19
<b>Dairy</b>	<b>Quantity (MT)</b>	
SMP	13,167	23,382
Butter	3,421	5,550
WMP	385	195
Cheese	350	
Whey Powder	166	
Ghee	25	15
<b>Bulk Milk</b>	<b>Quantity (Ltr)</b>	
Raw Chilled Milk	3,43,35,000	
Separated Skimmed Milk	1,29,40,000	
<b>Cattle Feed Ingredients</b>	<b>Quantity (MT)</b>	
Rice Bran/Polish	1,97,978	1,54,027
Maize	1,61,955	90,889
Cotton Seed Meal	14,875	10,190
Wheat	11,900	220
Mustard Meal	11,290	25,260
Coconut Meal	6,775	3,030
Calcite Powder	5,685	2,097
Gypsum	5,200	
Di Calcium Phosphate	3,633	1,600
Salt	2,612	950
Bajra	2,400	
Tur	2,400	
Rice	2,230	1,750
Urea	2,152	426
Shea	1,820	1,080
Sun Flower Meal	1,100	1,740
Soya Bean Meal	990	1,370
<b>Sugar</b>	7,395	3,974

\* Upto December 31, 2019



# Dairy

# Concluded Trades

Brand	Quantity Sold (MT) (December 2019)					Ex-Dairy Price Offered (₹/Kg) (26 Dec 2019)		
	SMP	Butter	WMP	Cheese	Whey Powder	SMP	Butter	Cheese
	430	22	20	100	50	320		358
	195	65						
	100							
	45							
		40					330	
		25						

# Bulk Milk

# Concluded Trades

Dairy	26-Dec-19		12-Dec-19	
	Qty (in Thousand Ltrs)	Ex-Plant Rate (Rs./Kg.TS)	Qty (in Thousand Ltrs)	Ex-Plant Rate (Rs./Kg.TS)
<b>Raw Chilled Milk</b>				
Dharmapuri	225	305	225	293
Dindigul	750	302	750	293
Erode	675	307	825	293
Karur			450	293
Krishnagiri			225	293
Namakkal	450	303	450	293
Salem			825	293
Sanur			225	293
Theni	450	301		
Tiruppur	1,500	308	1,725	293
Tiruvannamalai	900	304	1,350	293
Vellore	225	301	450	293
<b>Separated Skimmed Milk</b>				
Dharmapuri	225	267		
Erode	450	271		
Krishnagiri	450	262		
Salem	1,125	268		
Trichy	900	272		

**Seller**



**Tamilnadu Co-operative Milk Producers'  
Federation Limited (TCMPF)**

# Cattle Feed Ingredients

# Concluded Trades

Details of Trades				
State	Place	Qty (MT)	FOR Rate (₹/Kg)	Trade date
<b>Maize</b>				
Andhra Pradesh	Amadalavalasa	100	22.98	02-Dec-19
		200	23.98	13-Dec-19
	Anakapalli	100	23.48	02-Dec-19
		50	22.98	13-Dec-19
Karnataka	Dharwad	4,000	18.93	07-Dec-19
		2,000	20.67	18-Dec-19
		23,500	22.00	28-Dec-19
	Gubbi	2,000	22.49	19-Dec-19
		22,000	22.26	28-Dec-19
	Hassan	1,000	21.00	16-Dec-19
		2,000	21.47	18-Dec-19
	Rajanukunte	2,000	21.98	21-Dec-19
	Shikaripura	2,000	21.45	18-Dec-19
			18,500	21.66
<b>Maize Gluten Feed</b>				
Karnataka	Gubbi	200	19.95	20-Dec-19
	Shikaripura	500	19.60	
<b>De Oiled Rice Bran</b>				
Andhra Pradesh	Amadalavalasa	500	16.74	13-Dec-19
	Anakapalli	600	16.94	
Gujarat	Navsari	500	16.00	24-Dec-19
		165	13.90	04-Dec-19
	Rajkot	1,000	15.14	12-Dec-19
		1,000	15.69	26-Dec-19
	Karnataka	Dharwad	200	14.87
Gubbi		1,000	15.30	20-Dec-19
Hassan		300	15.47	27-Dec-19
Rajanukunte		1,250	15.70	20-Dec-19
Shikaripura		175	14.70	27-Dec-19
Kerala	Kallemthumkara	1,500	17.44	30-Dec-19
	Karunagapally	500	17.92	
	Pattanakad	1,000	18.50	
Tamil Nadu	Erode	600	17.80	06-Dec-19

# Cattle Feed Ingredients

# Concluded Trades

Details of Trades				
State	Place	Qty (MT)	FOR Rate (₹/Kg)	Trade date
<b>De Oiled Rice Bran</b>				
West Bengal	Jairambati	2,000	13.48	24-Dec-19
<b>De-Oiled Mustard Cake</b>				
Uttar Pradesh	Raebareli	10	21.00	03-Dec-19
<b>Cotton Doc</b>				
Andhra Pradesh	Amadalavalasa	200	24.78	13-Dec-19
	Anakapalli	80	24.79	
Karnataka	Dharwad	2,000	24.00	20-Dec-19
<b>Soya Doc</b>				
Kerala	Pattanakad	25	45.46	16-Dec-19
Tamil Nadu	Erode	25	43.20	10-Dec-19
<b>Technical Grade Urea</b>				
Kerala	Kallettumkara	60	21.90	04-Dec-19
		20	20.92	17-Dec-19
		40	43.20	30-Dec-19
	Kozhikode	20	20.42	20-Dec-19
		40	20.11	30-Dec-19
	Pattanakad	50	20.22	10-Dec-19
		50	20.24	26-Dec-19
	<b>Coffee Husk Powder</b>			
Karnataka	Dharwad	150	09.75	20-Dec-19
	Gubbi	300	09.50	
	Hassan	350	08.50	
	Rajanukunte	250	07.90	
	Shikaripura	400	09.75	
<b>Common Salt</b>				
Karnataka	Hassan	100	03.15	20-Dec-19
<b>De-Oiled Rapeseed Extraction</b>				
Tamil Nadu	Erode**	100	26.08	23-Dec-19
<b>Di-Calcium Phosphate</b>				
Andhra Pradesh	Guntur	01	39.30	27-Dec-19
<b>Rice Bran</b>				
Andhra Pradesh	Amadalavalasa	100	23.80	13-Dec-19
	Anakapalli	50	23.50	

\*\*Different Specification

# Cattle Feed Ingredients

# Concluded Trades

Details of Trades				
State	Place	Qty (MT)	FOR Rate (₹/Kg)	Trade date
<b>Rice Polish</b>				
Karnataka	Dharwad	750	20.50	20-Dec-19
	Gubbi	200	20.50	
	Hassan	900	21.80	
	Rajanukunte	350	20.79	
	Shikaripura	400	20.79	
Kerala	Kallemtumkara	250	25.84	30-Dec-19
	Karunagapally	100	27.90	04-Dec-19
		50	26.20	30-Dec-19
	Kozhikode	100	25.84	
<b>Shea Doc</b>				
Andhra Pradesh	Amadalavalasa	100	14.00	13-Dec-19
Karnakata	Hassan	400	14.95	20-Dec-19
<b>Broken Rice</b>				
Kerala	Pattanakad	150	20.94	04-Dec-19
<b>Wheat Bran</b>				
Assam	Juripar	20	22.15	19-Dec-19
<b>Calcite Powder</b>				
Andhra Pradesh	Amadalavalasa	25	05.20	13-Dec-19
Bihar	Muzzafarpur	45	03.85	17-Dec-19
Karnataka	Dharwad	350	02.99	20-Dec-19
	Gubbi	175	03.00	
	Hassan	300	03.30	
	Rajanukunte	150	03.20	
	Shikaripura	200	03.10	
<b>Soyabean Meal</b>				
Kerala	Kallemtumkara	50	41.00	04-Dec-19

## Chemicals

## Concluded Trades

### Details of Trades

State	Place	Qty (Kg)	FOR Rate (₹/Kg)	Trade Date
-------	-------	----------	-----------------	------------

#### Caustic Soda Flakes

Andhra Pradesh	Tirupati	10,000	#34.60	12-Dec-19
	Kangra	3,000	35.24	
Himachal Pradesh	Mandi	8,000	36.00	20-Dec-19
	Shimla	9,000	35.25	

#### Caustic Soda Lye

Uttar Pradesh	Pilkhua	1,80,000	#14.10	10-Dec-19
	Etawah	90,000	#14.10	17-Dec-19

#### Nitric Acid

Andhra Pradesh	Tirupati	3,000	#23.00	20-Dec-19
Uttar Pradesh	Pilkhua	15,000	#10.80	09-Dec-19
		15,000	#12.90	26-Dec-19

#### Amyl Alcohol

	Kangra	100	85.00	
Himachal Pradesh	Mandi	150	79.00	20-Dec-19
	Shimla	150	76.40	

#### Hydrogen Peroxide

	Kangra	500	66.00	
Himachal Pradesh	Mandi	1,000	64.00	20-Dec-19
	Shimla	1,500	63.80	

#### Liquid Detergent

	Kangra	4,000	24.50	
Himachal Pradesh	Mandi	6,000	31.00	20-Dec-19
	Shimla	8,000	26.00	

# Exclusive of GST

## Others

## Concluded Trades

### Details of Trades

State	Place	Qty (MT)	FOR Rate (₹/MT)	Trade Date
-------	-------	----------	-----------------	------------

#### Rice Husk

Uttar Pradesh	Pilkhua	1,000	3,475.00	05-Dec-19
		2,000	3,544.00	26-Dec-19

# Scrap

# Concluded Trades

Details of Trades					
State	Place	Qty	Unit	Ex-Plant Rate (₹/Unit)	Trade date
<b>Freezer (Scrap)</b>					
West Bengal	Kolkata	1	Lot	1,68,000.00	06-Dec-19
<b>Carton</b>					
Bihar	Barauni	3,000	Kgs	04.36	05-Dec-19
<b>Caustic Bag</b>					
Bihar	Barauni	3,500	Kgs	17.75	05-Dec-19
<b>Iron Scrap</b>					
Bihar	Barauni	5,000	Kgs	15.85	05-Dec-19
<b>Metal Seal Broken</b>					
Bihar	Barauni	500	Kgs	05.10	05-Dec-19
<b>Plastic Crate (Broken)</b>					
Bihar	Barauni	3,000	Kgs	32.00	05-Dec-19
<b>Plastic Drum 250Ltr (Scrap)</b>					
Bihar	Barauni	90	Nos	690.00	05-Dec-19
<b>Plastic Jar 25/30 Ltr</b>					
Bihar	Barauni	150	Nos	72.00	05-Dec-19
<b>Plastic Jar(100 Ltr)</b>					
Bihar	Barauni	20	Nos	310.50	05-Dec-19
<b>Plastic Wrapper, Scrap Cups</b>					
Bihar	Barauni	300	Kgs	05.10	05-Dec-19
<b>Rusted Tin</b>					
Bihar	Barauni	200	Nos	03.75	05-Dec-19
<b>Salt Bag</b>					
Bihar	Barauni	500	Kgs	13.51	05-Dec-19
<b>Sugar HDPE Bag (Scrap)</b>					
Bihar	Barauni	3,000	Kgs	24.00	05-Dec-19
<b>Used PP Bags</b>					
Rajasthan	Ajmer	18,750	Kgs	10.50	23-Dec-19

## Dairy Scrap

## Concluded Trades

Details of Trades				
State	Place	Qty (MT)	Ex-Plant Rate (₹/Kg)	Trade Date
<b>Sweep Powder</b>				
Delhi	Patparganj	2	21.00	27-Dec-19
Karnataka	Bangalore	4	120.00	02-Dec-19
	Bijapur	4	102.00	02-Dec-19
		5	106.00	23-Dec-19
	Channarayapatna	5	120.00	02-Dec-19
		8	152.00	23-Dec-19
	Dharwad	7	151.00	02-Dec-19
		8	152.00	23-Dec-19
	Kanakapura	10	122.00	02-Dec-19
		3	101.00	23-Dec-19
	Mandya	6	139.00	02-Dec-19
6		152.00	23-Dec-19	
Tamil Nadu	Erode	1	116.00	09-Dec-19
<b>Scum Ghee</b>				
Telangana	Hyderabad	16	24.00	07-Dec-19

## Dry Fruits & Nuts

## Concluded Trades

Details of Trades				
State	Place	Qty (Kgs)	FOR Rate (₹/Kgs)	Trade Date
<b>Almond Kernels</b>				
Haryana	Ballabgarh	2,800	#609.00	27-Dec-19
<b>Cashew Nut Kernels (W-320/White Wholes)</b>				
Haryana	Ballabgarh and Rai	6,100	#648.00	27-Dec-19
<b>Cashew SWP (Small White Pieces)</b>				
Haryana	Ballabgarh	600	#485.00	27-Dec-19

# Exclusive of GST



## Sugar

## Concluded Trades

### Details of Trades

State	Place	Qty (MT)	FOR Rate (₹/Kg)	Trade Date
<b>G-60</b>				
Maharashtra	Bhiwandi	10	36.28	24-Dec-19
	Vashi	10	36.30	
Uttar Pradesh	Etawah	30	35.04	13-Dec-19
	Pilkhuwa	30	35.82	05-Dec-19
<b>G-100</b>				
Delhi	Patparganj	30	35.14	02-Dec-19
		30	36.11	28-Dec-19
<b>M-30</b>				
West Bengal	Champadanga	11	38.80	21-Dec-19
<b>M-31</b>				
Bihar	Barauni	200	35.04	03-Dec-19
	Phulwari Sharif	45	37.77	23-Dec-19
	Samastipur	60	35.17	03-Dec-19
Haryana	Ballabgarh	20	35.29	14-Dec-19
<b>Pharma Grade</b>				
Haryana	Jind	40	39.05	27-Dec-19
	Sirsa	40	38.25	03-Dec-19

## Packaging Materials

## Concluded Trades

### Details of Trades

State	Place	Qty	Unit	FOR Rate (₹/Unit)	Trade Date
<b>HDPE Pallets</b>					
Gujarat	Rajkot	70	Nos	3,500.00	09-Dec-19
<b>LDPE Laminated Printed Polypropylene Bags (50Kg Cap)</b>					
Tamil Nadu	Erode	10,00,000	Nos	26.45	23-Dec-19



## Buyers



**Milk Union** Mother Dairy Fruit and Vegetable Pvt Ltd

**Category** Services

**Location** Patparganj & Pilkhuwa

**Category** Chocolates

**Location** PAN India

**Category** Dry Fruits & Nuts

**Location** Patparganj, Ballabgarh & Rai

**Milk Union**

Mother Dairy Fruit and Vegetables Private Ltd. (Tirupati)

**Category** Chemicals

**Location** Tirupati



**Milk Union**

Kaira District Cooperative Milk Producers' Union Ltd.

**Category** Cattle Feed Ingredients **Location** Jairambati



**Milk Union**

West Assam Milk Producers Cooperative Union Limited

**Category** Cattle Feed Ingredients **Location** Juripar



**Milk Federation**

The H. P. State Cooperative Milk Producers' Federation Ltd.

**Category** Chemicals

**Location** Shimla, Mandi & Kangra

## Seller



**Cattlefeed Plant**

Cattle feed Plant, Ajmer

**Category** Scrap

**Location** Ajmer



**A meeting to discuss further utilization of NCDFI eMarket services by Mother Dairy Fruits & Vegetable Pvt. Ltd (MDFVL) was held between senior officials of MDFVL and NCDFI on December 10, 2019 at NCDFI, Anand. The meeting was chaired by Shri Sangram Chaudhary, Managing Director, MDFVL.**

---

# Upcoming Events

---

## National Events

---

**03 - 05 Jan 2020**

**Agriculture Dairy & Food Processing Tech Expo 2020  
Ahmedabad, Gujarat**

Trade Fair and Seminars  
[www.adftechexpo.com](http://www.adftechexpo.com)

---

**03 - 07 Jan 2020**

**Food Expo Ludhiana 2020  
Ludhiana, Punjab**

Trade show focusing on the companies' news, products & services of Food & Beverages, Wellness, Health & Fitness industry  
[www.xpobuzz.com/food-expo-ludhiana](http://www.xpobuzz.com/food-expo-ludhiana)

---

**10 - 12 Jan 2020**

**Agri & Dairy Tech Expo 2020  
Erode, Tamil Nadu**

Exhibition of Agriculture and Dairy Technologies  
[www.unitedagriexpo.com/index.html](http://www.unitedagriexpo.com/index.html)

---

**10 - 12 Jan 2020**

**DairyTech Pune  
Pune, Maharashtra**

National Trade fair on Dairy Processing & Packaging Machinery, Dairy Products and Allied Industries  
[www.expodatabase.de/en/expos/73116-dairytech-pune-india](http://www.expodatabase.de/en/expos/73116-dairytech-pune-india)

---

**10 - 13 Jan 2020**

**Hi Tech Agri Fair  
Bhuj, Gujarat**

Trade fair for Agriculture, Dairy & Food Processing sector  
[www.hitechagrifair.com](http://www.hitechagrifair.com)

---

**23 - 25 Jan 2020**

**DAP EXPO Exhibition on Agriculture, Poultry & Dairy  
Chandigarh**

Agri Dairy & Poultry Expo  
[www.agriproexpo.com](http://www.agriproexpo.com)

---

**29 - 31 Jan 2020**

**Dairy & Feed Tech Expo  
Bhopal, Madhya Pradesh**

Exhibition cum conference on dairy products, processing and packaging machinery and technology  
[www.foodpackexpo.com](http://www.foodpackexpo.com)

---

**30 Jan - 1 Feb 2020**

**Foodtech Kerala  
Cochin, Kerala**

Trade show focusing on the food processing & packaging industry  
[www.foodtechkerala.com](http://www.foodtechkerala.com)

**01 - 04 Feb 2020**

**FarmTech Asia  
Raipur, Chhattisgarh**

International Exhibition and Conference on  
Agriculture, Horticulture, Dairy Industry  
[www.farmtechasia.com](http://www.farmtechasia.com)

---

**05 - 06 Feb 2020**

**India Food Forum  
Mumbai, Maharashtra**

Trade fairs of the food and beverage sector with  
focus on the grocery  
[www.tradefairdates.com/India-Food-Forum-M12120/Mumbai.html](http://www.tradefairdates.com/India-Food-Forum-M12120/Mumbai.html)

---

**06 - 07 Feb 2020**

**International Conference on Animal Welfare in Cattle Production  
Mumbai, Maharashtra**

Interdisciplinary platform for the most recent innovations, trends, and concerns as  
well as practical challenges in the fields of Animal Welfare in Cattle Production  
[www.waset.org/animal-welfare-in-cattle-production-conference-in-february-2020-in-mumbai](http://www.waset.org/animal-welfare-in-cattle-production-conference-in-february-2020-in-mumbai)

---

**International Events**

---

**02 - 05 Feb 2020**

**ISM 2020  
Cologne, Germany**

International supplier trade fair for the sweets and snacks  
[www.ism-cologne.com](http://www.ism-cologne.com)

---

**05 Feb 2020**

**Dairy Tech  
Coventry, United Kingdom**

Dairy-Tech will showcase a fresh show that recognizes the pressing needs of the  
modern dairy professionals  
[www.dairy-tech.uk](http://www.dairy-tech.uk)

---

**11-13 Feb 2020**

**Ice Cream & Artisan Food Show 2020  
Harrogate, United Kingdom**

It is a unique expo showcasing a huge assortment of ice cream varieties together  
with its equipment and supplies  
[www.ice-cream.org/content/ice-cream-artisan-food-show](http://www.ice-cream.org/content/ice-cream-artisan-food-show)

---

**18-21 Feb 2020**

**DairyTech , Dairy & Meat Industry 2020  
Moscow, Russia**

Russia's only exhibition of equipment and technologies for the dairy industry  
[www.dairytech-expo.ru/Home](http://www.dairytech-expo.ru/Home)

---

**30 Mar - 01 Apr 2020**

**Foodex and the Ingredients Show  
Birmingham, United Kingdom**

The UK's premier trade event for the food & drink processing, packaging and  
logistics industries  
[www.foodex.co.uk](http://www.foodex.co.uk) & [www.theingredientsshow.co.uk](http://www.theingredientsshow.co.uk)

# NCDFI EMARKET APP

[www.NCDFIeMarket.com](http://www.NCDFIeMarket.com)

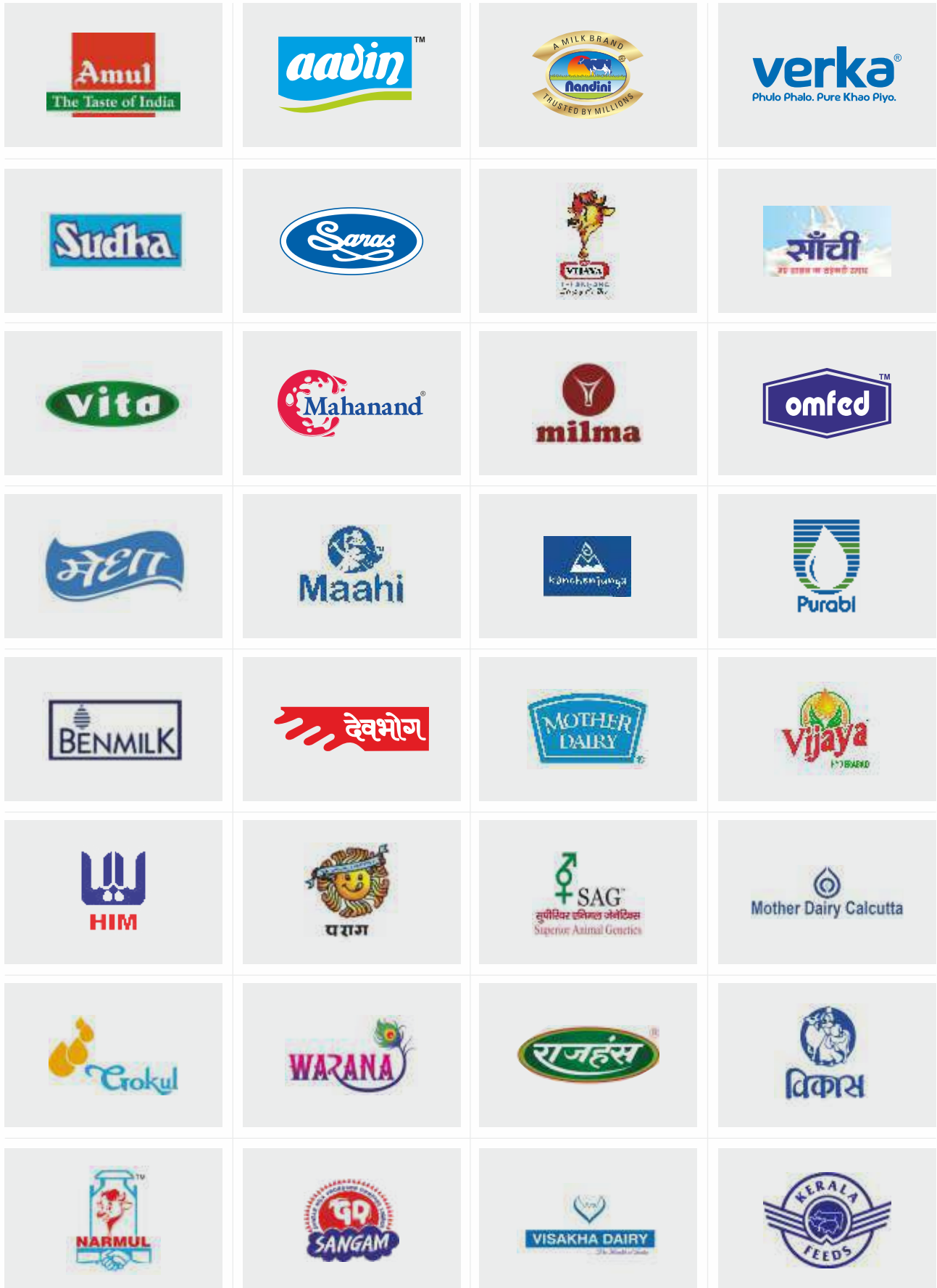
**NCDFI eMarket App enables you to be updated with customized auction information for your preferred products for the auctions conducted through NCDFI eMarket portal.**



SCAN  
QR CODE  
FOR  
eMarket  
APP



# Associated Brands





## Service contracts floated through



Housekeeping Services

Deep Freezers Hiring

Pest Control Services

Packaging Job Work &  
Manpower Services in Poly-Pack Milk Plant

Operation & Maintenance of  
Boiler and Plant Maintenance Job



**National Cooperative Dairy Federation of India Ltd.**  
NDDB D-Lab Campus, Post Box 79, Anand 388 001  
☎ +91-2692-288388 📠 288399 ✉ info@NCDFIeMarket.com  
🌐 www.NCDFIeMarket.com | www.NCDFI.coop